

UC SYSTEMWIDE GRADUATE STUDENTS' BASIC NEEDS DURING COVID-19 SURVEY

INFOGRAPHIC REPORT: COVID-19 EFFECTS ON STUDENTS' BASIC NEEDS



SURVEY METHODS

During the summer of 2020, an online survey was administered to graduate students who had received Basic Needs services at seven University of California campuses. Respondents reported COVID-19 exposures and infections, COVID-19 impacts on work, basic needs (food and housing) and academics, and campus Basic Needs service utilization. The following infographics pertain to COVID-19 impacts on graduate students' basic needs.



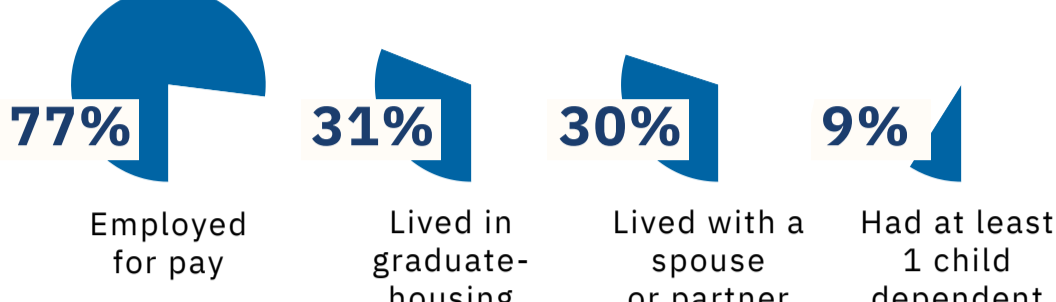
RESPONSES PER CAMPUS

UC San Diego	219	28%
UC Los Angeles	136	17%
UC Riverside	130	16%
UC Irvine	105	13%
UC Berkeley	101	13%
UC San Francisco	51	6%
UC Davis	49	6%

Total 791 100%



SAMPLE

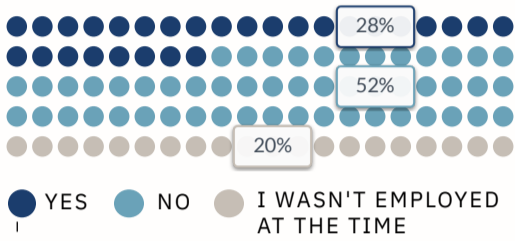


UNIVERSITY OF CALIFORNIA

RESULTS

EFFECTS OF COVID-19 ON EMPLOYMENT/PAY

HAVE YOU HAD A CHANGE IN **PAID** WORK DUE TO COVID-19?



133 students had hours decreased or lost a job

29 students had hours increased or got a 2nd job

21 students had no paid work

HAS YOUR WORK **INCOME** CHANGED DUE TO COVID-19?



\$2,809 students' monthly (pre-taxed) household income prior to COVID-19

-\$1,069 average decrease in students' income (n=121)

With the nature of your job, are you able to **work remotely**?

50% Yes, 100% of the time

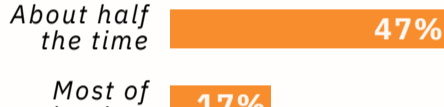
35% Yes, less than 100% of the time

16% No, not at all

EFFECTS OF COVID-19 ON FINANCES & FINANCIAL AID

49% OF STUDENTS REPORTED THAT THEIR **EXPENSES** HAD **INCREASED** SINCE COVID-19 (n=384)

DURING COVID-19, HOW OFTEN DID YOU SHARE YOUR MONEY WITH LOVED ONES?



42% of students reported having a **financial aid package** in AY 2019-20 (n=329)

HOW DID COVID-19 IMPACT YOUR USE OF YOUR FINANCIAL AID PACKAGE?

46% MY USAGE DIDN'T CHANGE

33% RECEIVED ADDITIONAL COVID-19 FINANCIAL AID

16% ACCEPTED MORE OF MY PACKAGE THAN OTHERWISE

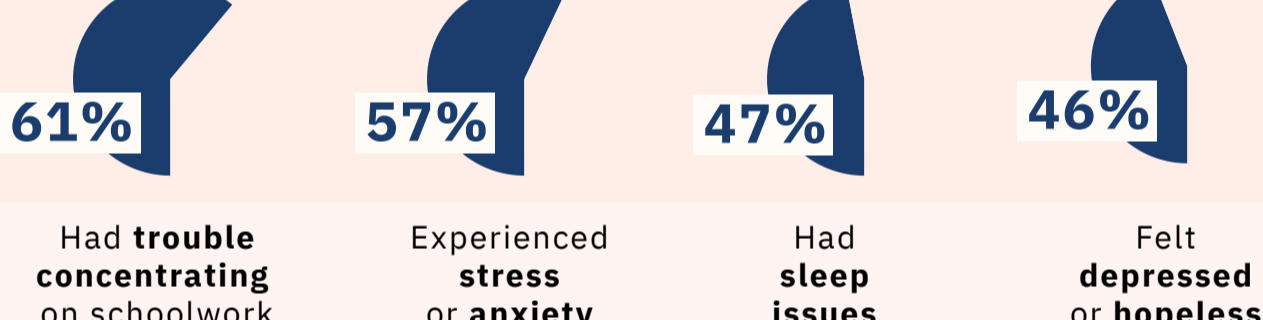
28% Have had difficulty covering costs like credit cards during COVID-19

23% Applied for housing subsidies or allowances due to COVID-19

22% Have had difficulty paying for basic needs like food & housing during COVID-19

EFFECTS OF COVID-19 ON HEALTH & WELLNESS

STUDENTS EXPERIENCED THE FOLLOWING **NEARLY EVERY DAY** DURING COVID-19...



MOST COMMON CHALLENGES **DISRUPTING** STUDENTS' ACADEMIC, TEACHING, AND/OR RESEARCH RESPONSIBILITIES:

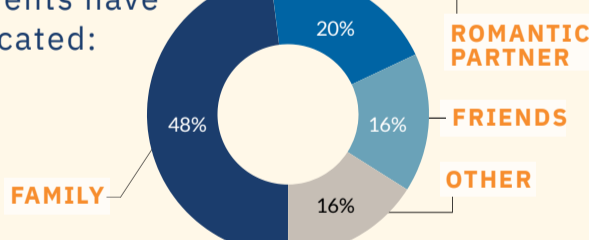


EFFECTS OF COVID-19 ON HOUSING SECURITY

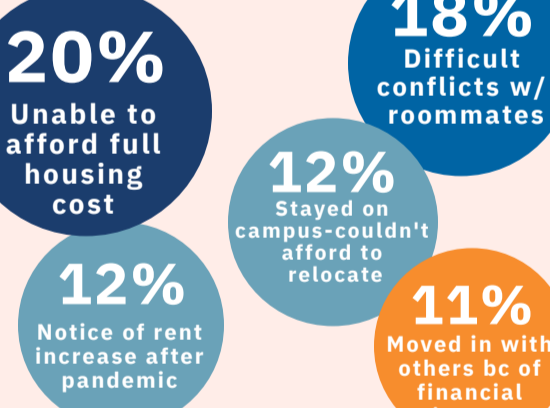
1 in 10 students reported being **housing insecure** or at risk of being housing insecure during COVID-19

21% of students **relocated** as a result of COVID-19 (n=162)

With whom students have relocated:



[TOP 5] Have you experienced any of the following **housing issues** due to COVID-19?



EFFECTS OF COVID-19 ON FOOD SECURITY

TOP FACTORS PREVENTING STUDENTS FROM GETTING THE FOOD THEY NEEDED

44% AFRAID TO GO TO GROCERY STORE

38% DIDN'T FEEL SAFE GOING TO PANTRY/GROCERY STORE DUE TO RISK OF EXPOSURE

33% LONG LINES AT GROCERY STORE

45% OF STUDENTS REPORTED BEING **FOOD INSECURE** SINCE COVID-19 (n=345)

BASIC NEEDS RESOURCES DURING COVID-19

52% reported that **basic needs resources** have **often** or **always** been accessible for grad. students at their campuses

33% noted **hours of operation** as a **barrier** to accessing basic needs resources at their campuses

CALFRESH **86%** are not currently enrolled in CalFresh

56% of students who are not currently enrolled **do not know if they are CalFresh eligible**

50% **ACCESSED FOOD ASSISTANCE**

- 34% accessed the **food pantry & pop ups** **87% rated as helpful**
- 13% accessed the **grocery vouchers** **95% rated as helpful**
- 12% accessed the **pantry boxes/bundles** **91% rated as helpful**

25% **ACCESSED FINANCIAL RELIEF**

- 34% accessed **emerg. grants/loans** **81% rated as helpful**
- 6% accessed **emerg. gift cards** **78% rated as helpful**
- <2% accessed grants for student parents or former foster youth, and/or emergency medical relief

6% **ACCESSED HOUSING ASSISTANCE**

- 4% accessed **emerg. rental assistance, housing grants, or vouchers** **74% rated as helpful**
- <2% accessed emergency housing, security deposit funds, and/or housing case management

68% OF STUDENTS REPORTED THAT AT **LEAST 1 SERVICE REDUCED STRESS** OR **ANXIETY** RELATED TO MEETING THEIR BASIC NEEDS (N=515)

NEARLY **50%** OF ALL STUDENTS INDICATED THIS SERVICE AS **FOOD ASSISTANCE**

EFFECTS OF COVID-19 ON GRADUATE STUDENT LIFE

STUDENT TEACHERS (n=224) **44%** **93%** **concerned** about their students' abilities to meet basic needs during campus shut-downs **connected** students to basic needs resources at their campuses

PARENTING STUDENTS (n=71) **82%** have difficulty focusing on work w/ their children around **76%** concerned with children's social/mental well-being while confined **58%** concerned about children's future academic performance

STUDENTS' SPOUSES OR PARTNERS (n=233) **21%** are full-time students **Employed - no change** **28%** **Employed- hours decreased** **16%** **Recently laid off** **13%**

STUDENTS W/ DEPENDENTS (n=46) **76%** have 1 or 2 **adult depts.** (n=35) **67%** concerned w/ well-being of dependents **59%** have difficulty focusing on work w/ dependent around

Contacts: Suzanna Martinez, PhD, Suzanna.Martinez@ucsf.edu & Sevan Kalaydjian, MA, skalaydj@uci.edu

UC SYSTEMWIDE BASIC NEEDS RESEARCH & EVALUATION TEAM